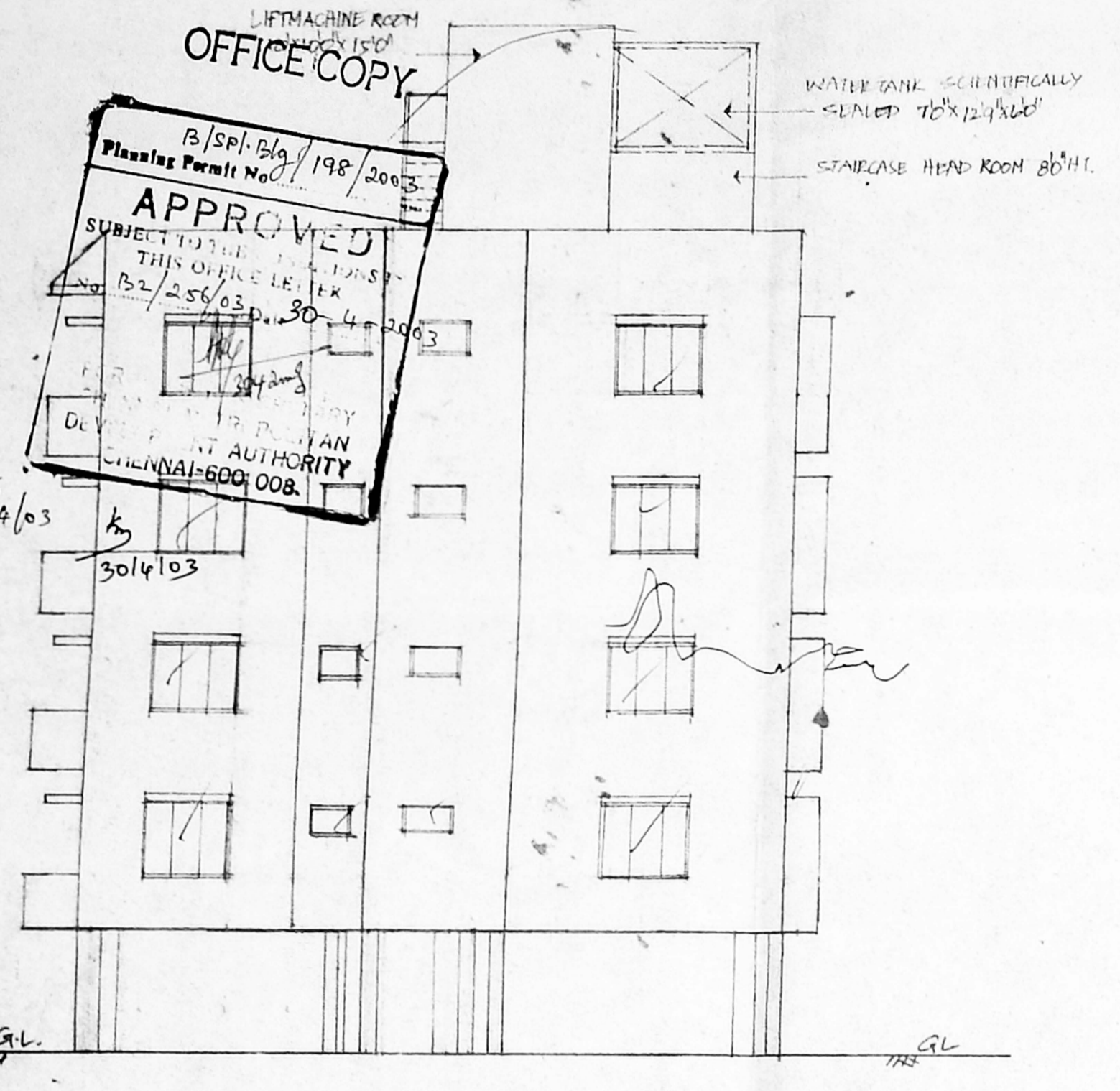
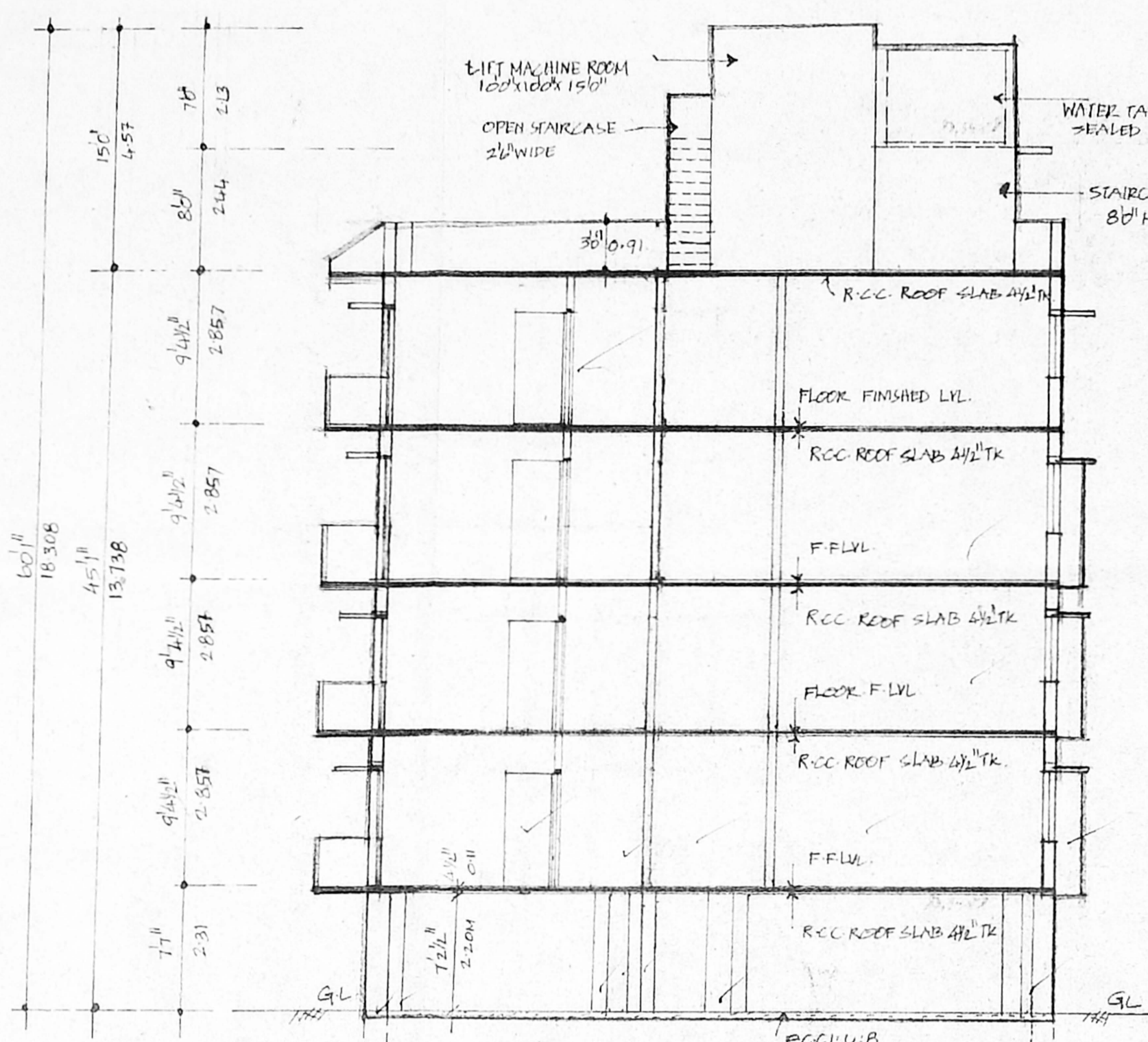


Revised  
Dt. 28/3/14

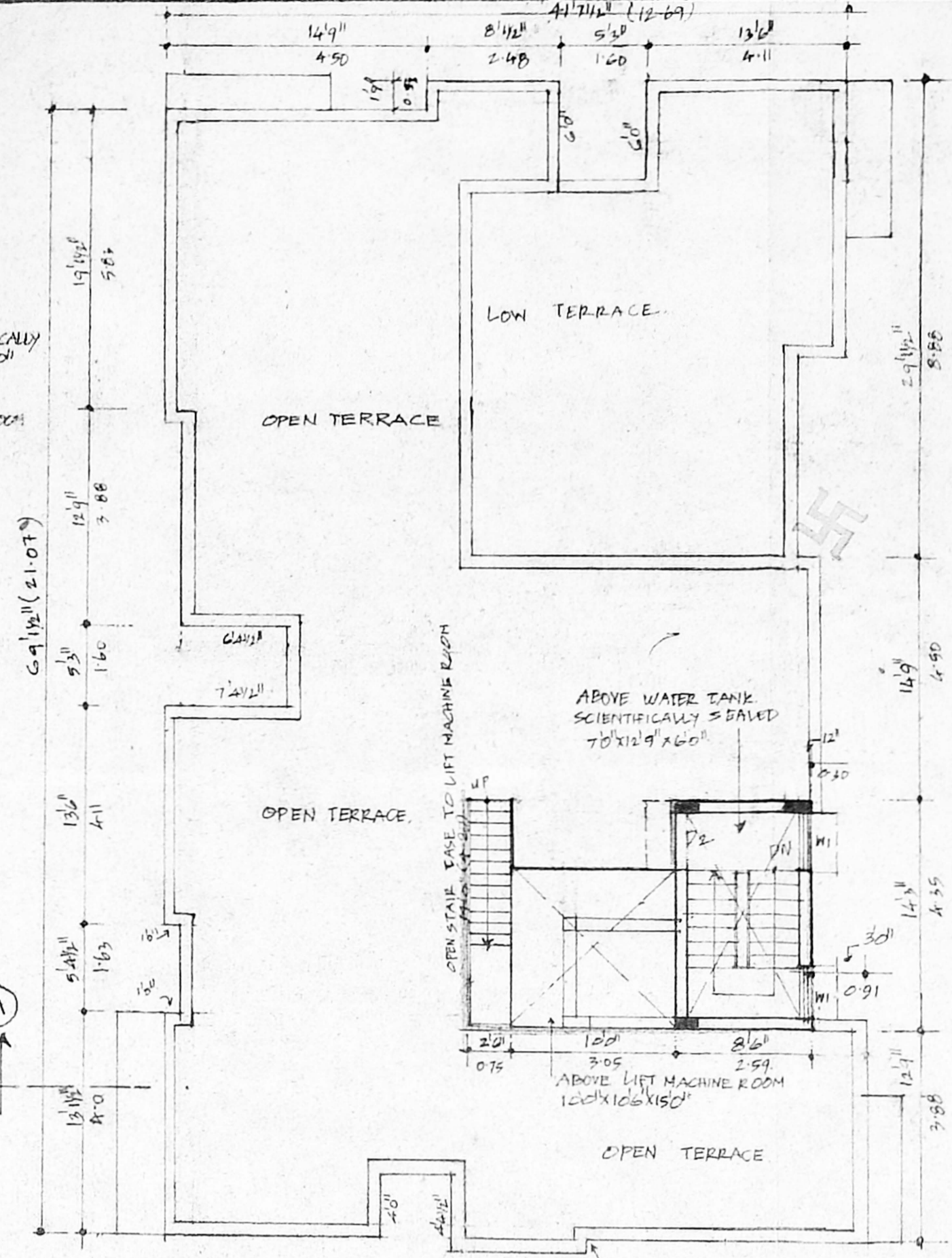
CMDA (B) NO. 1  
C. No. B-256/03  
Scrutiny  
P. A. 12/4/03  
12/4/03  
A.P. 2/14/03  
D.P. 2/14/03



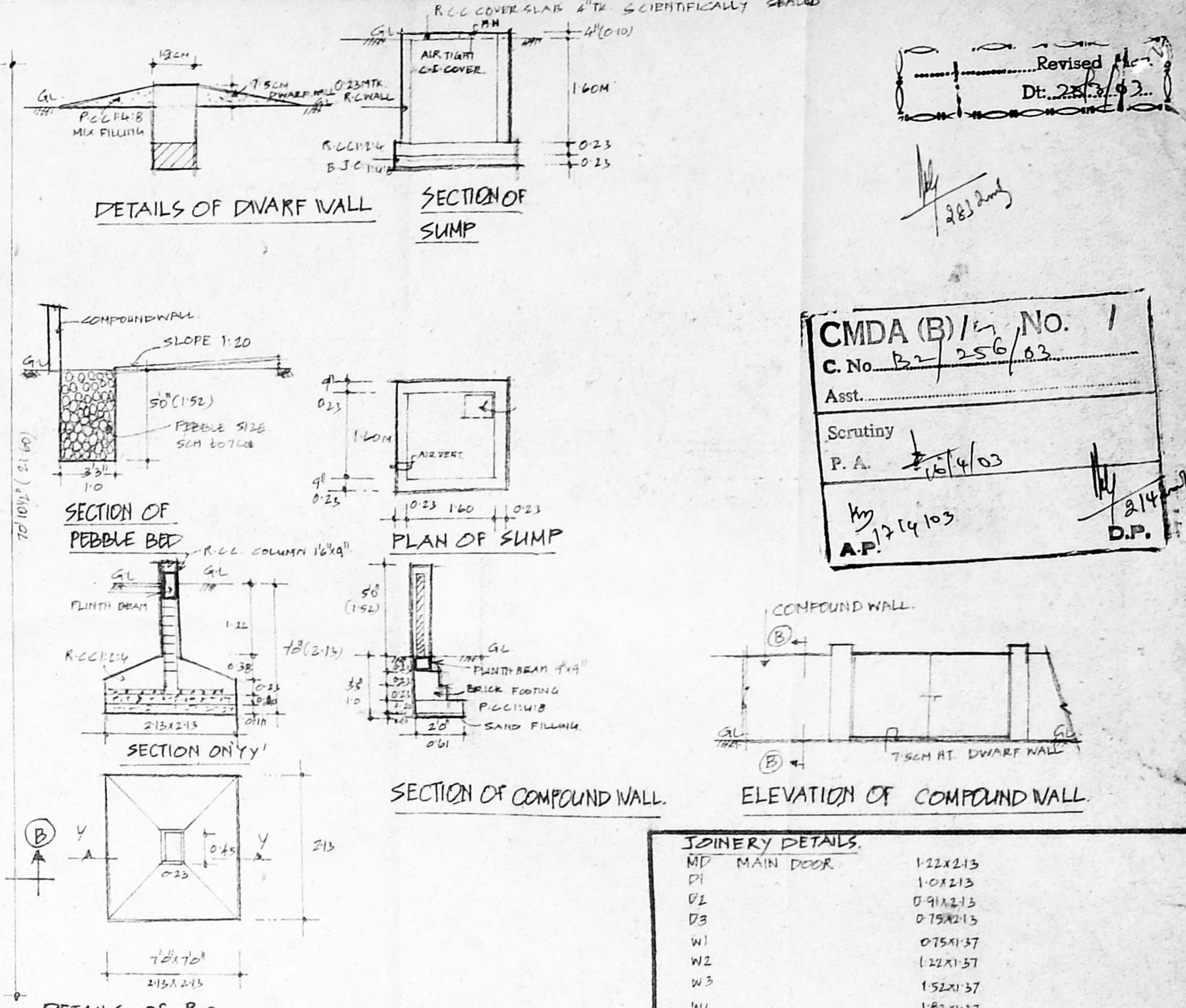
FRONT ELEVATION



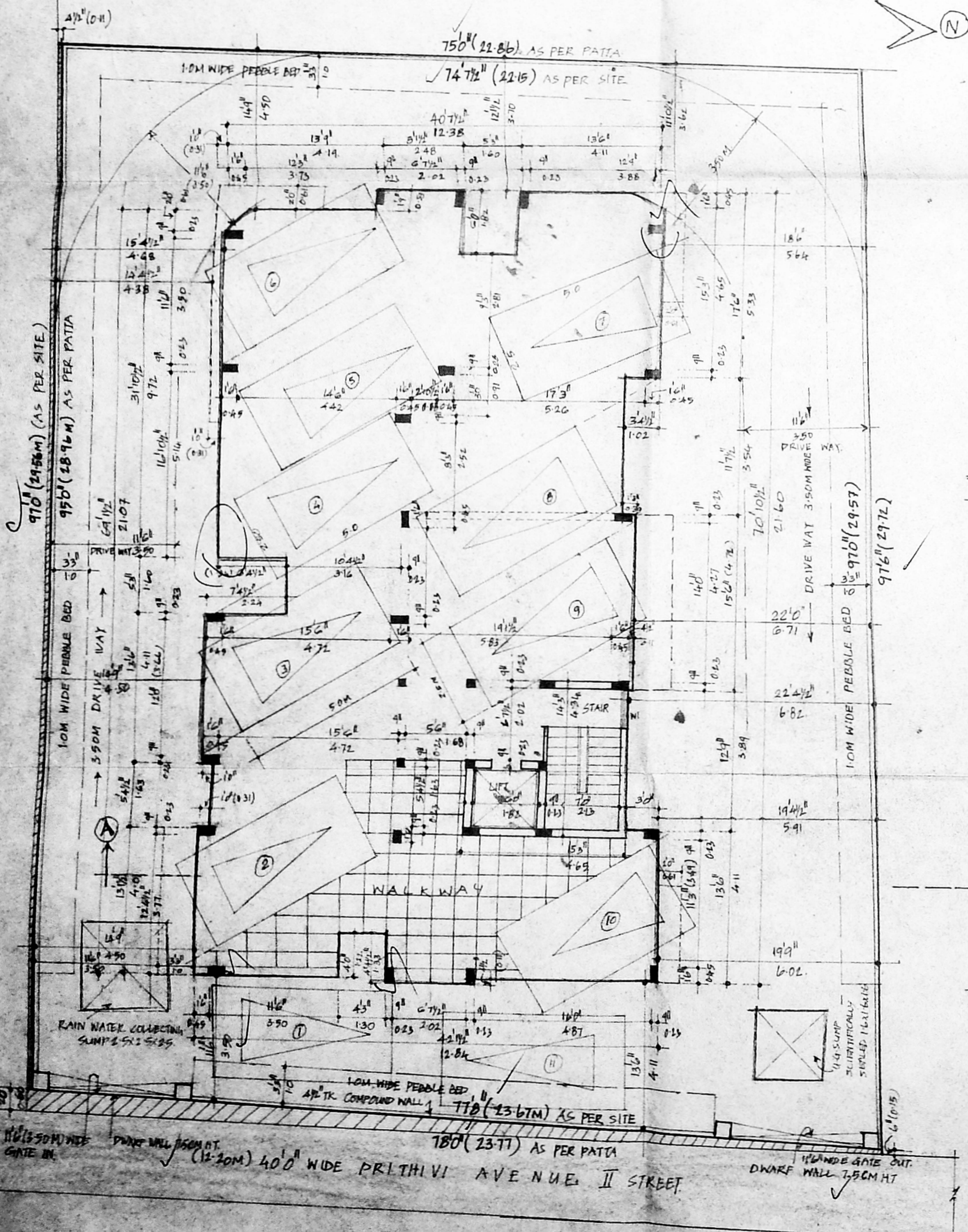
SECTION ON 'AB'



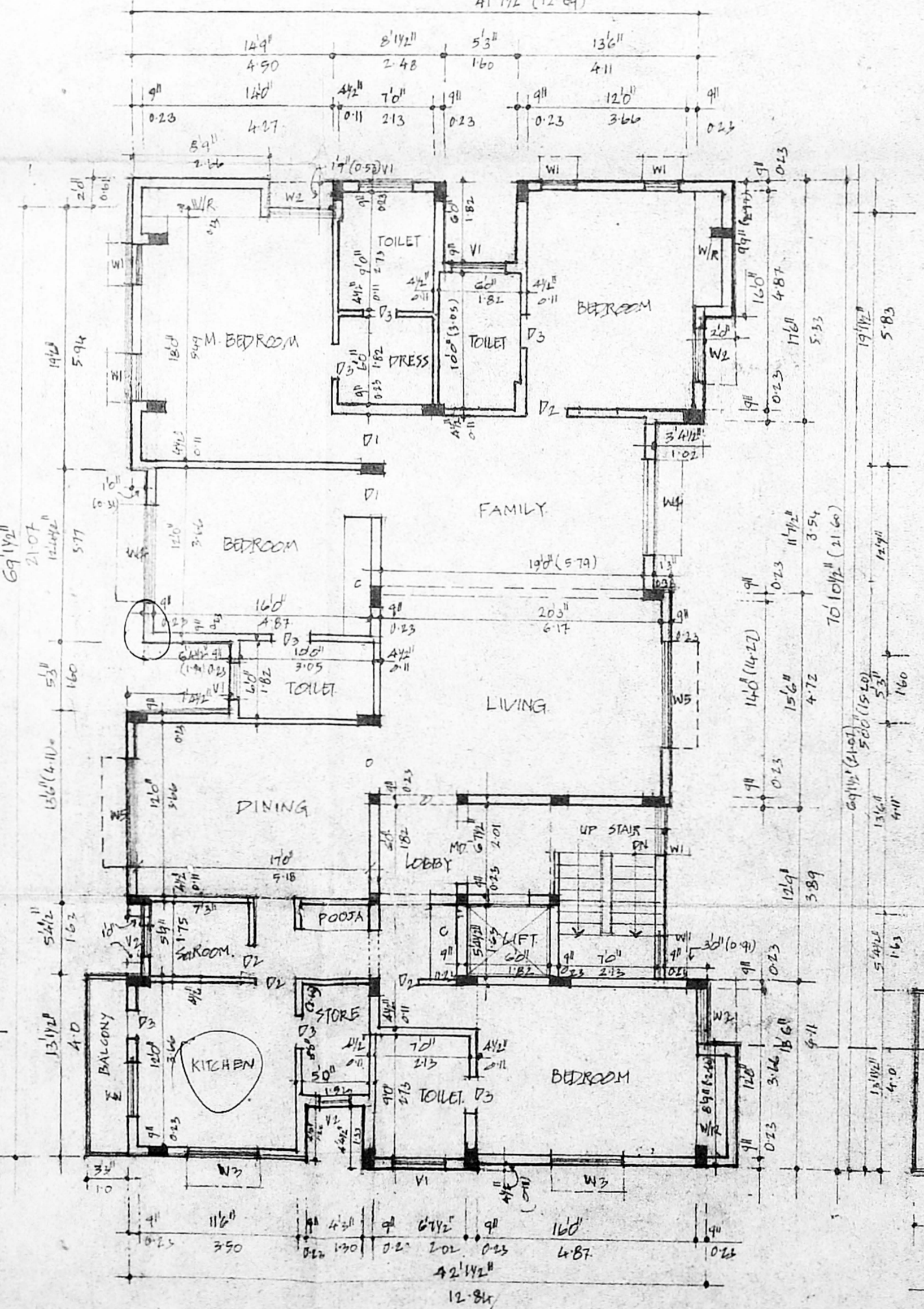
TERRACE FLOOR PLAN



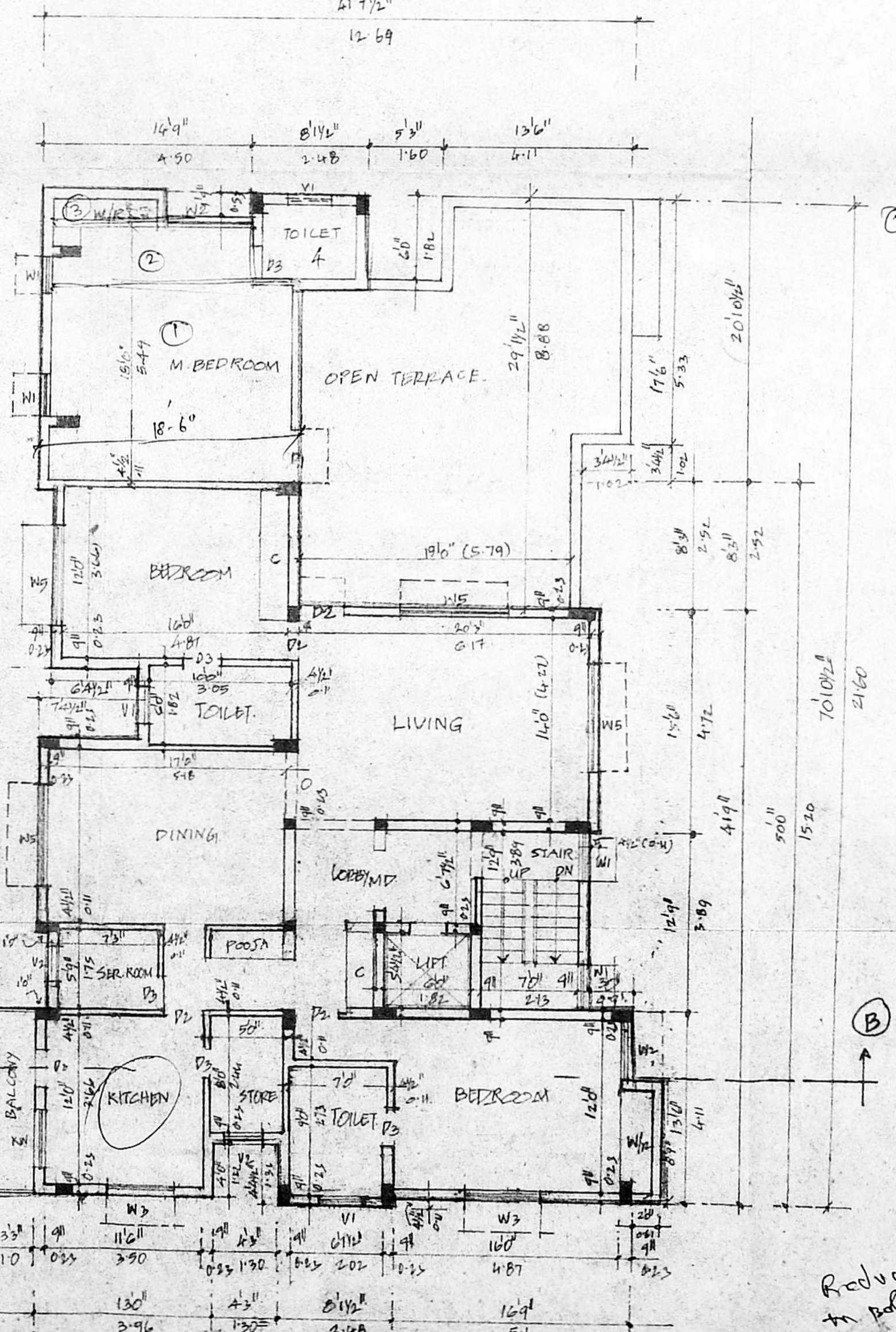
DETAILS OF R.C.C. COLUMN FOUNDATION



STILT PARKING FLOOR PLAN / SITE PLAN

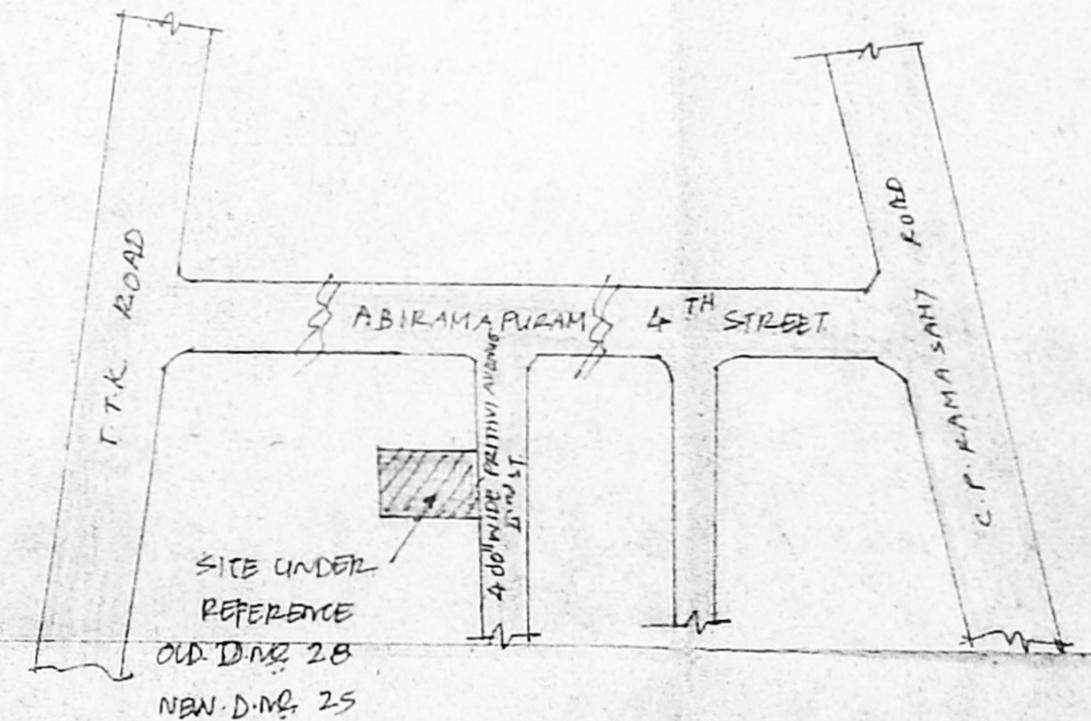


TYPICAL FLOOR PLAN (FIRST, SECOND & THIRD FLOOR)



FOURTH FLOOR PLAN

Handwritten calculations:  
 $5.14 \times 4.54 = 23.53$   
 $4.5 \times 1.39 = 6.25$   
 $2.66 \times 1.53 = 4.07$   
 $2.48 \times 1.82 = 4.51$   
 Total = 38.36



KEY PLAN  
N.T.S.

JOINERY DETAILS	
MD MAIN DOOR	122x213
DI	104x213
D2	091x213
D3	075x213
W1	075x157
W2	132x157
W3	152x157
W4	182x157
W5	252x157
FD1 FRENCH DOOR	246x213
KW1 KITCHEN WINDOW	132x105
V1 VENTILATOR	081x061
V2	061x061

COLOUR PROPOSED	
LOT BOUNDARY	White
ROAD	Grey

AREA DETAILS	
PLOT EXTENT (AS PER PATTA)	679.80
STILT FLOOR PLINTH AREA	1552
FIRST FLOOR PLINTH AREA	262.03
SECOND FLOOR PLINTH AREA	262.03
THIRD FLOOR PLINTH AREA	262.03
FOURTH FLOOR PLINTH AREA	208.70
TOTAL	1010.31
PLOT COVERAGE : 38.55%	
F.S.I	1.486

PLAN SHOWING THE PROPOSED RESIDENTIAL FLATS AT OLD DNO 28 NEW D NO 25, PRITHVI AVENUE II ST. ABIRAMPURAM, CHENNAI - 600 018 RS. NO 3674/10, BLOCK NO 73 MYLAPORE DIVISION, MYLAPORE-TRIPLICANE TALUK, CHENNAI DIST. CORPORATION DV. NO. 10 ZONE: 10

SCALE 1" = 80' (1:100)

For Vishwanth Homes Private Limited  
OWNER  
Managing Director

K. SELVAM, B.E. AMIE, C. Eng. (I) A.I.T.E.  
Consulting Civil Engineer, Chartered Engineer  
Approved Valuer & Licensed Surveyor  
Class I Reg. No. 600-2400-2003  
Door No. 11177, Thiruvalluvar Salai,  
Mogappair East, Chennai-600 080.  
Ph: 2656250, Cell: 9811232050  
(Green Channel File Not Applicable)

Reduction in plan area  
 $4.11 \times 10 = 4.11$   
 $4.72 \times 10 = 4.72$   
 $8.83 \times 4 \text{ floors} = 35.32 \text{ m}^2$   
 $37.66 \text{ m}^2$   
 $35.32 + 37.66 = 72.98$   
 $72.98 \times 1.48 = 108.01$   
 $108.01 - 1.74 = 106.27$   
 $106.27 - 1.74 = 104.53$   
 $104.53 - 1.74 = 102.79$   
 $102.79 - 1.74 = 101.05$   
 $101.05 - 1.74 = 99.31$   
 $99.31 - 1.74 = 97.57$   
 $97.57 - 1.74 = 95.83$   
 $95.83 - 1.74 = 94.09$   
 $94.09 - 1.74 = 92.35$   
 $92.35 - 1.74 = 90.61$   
 $90.61 - 1.74 = 88.87$   
 $88.87 - 1.74 = 87.13$   
 $87.13 - 1.74 = 85.39$   
 $85.39 - 1.74 = 83.65$   
 $83.65 - 1.74 = 81.91$   
 $81.91 - 1.74 = 80.17$   
 $80.17 - 1.74 = 78.43$   
 $78.43 - 1.74 = 76.69$   
 $76.69 - 1.74 = 74.95$   
 $74.95 - 1.74 = 73.21$   
 $73.21 - 1.74 = 71.47$   
 $71.47 - 1.74 = 69.73$   
 $69.73 - 1.74 = 67.99$   
 $67.99 - 1.74 = 66.25$   
 $66.25 - 1.74 = 64.51$   
 $64.51 - 1.74 = 62.77$   
 $62.77 - 1.74 = 61.03$   
 $61.03 - 1.74 = 59.29$   
 $59.29 - 1.74 = 57.55$   
 $57.55 - 1.74 = 55.81$   
 $55.81 - 1.74 = 54.07$   
 $54.07 - 1.74 = 52.33$   
 $52.33 - 1.74 = 50.59$   
 $50.59 - 1.74 = 48.85$   
 $48.85 - 1.74 = 47.11$   
 $47.11 - 1.74 = 45.37$   
 $45.37 - 1.74 = 43.63$   
 $43.63 - 1.74 = 41.89$   
 $41.89 - 1.74 = 40.15$   
 $40.15 - 1.74 = 38.41$   
 $38.41 - 1.74 = 36.67$   
 $36.67 - 1.74 = 34.93$   
 $34.93 - 1.74 = 33.19$   
 $33.19 - 1.74 = 31.45$   
 $31.45 - 1.74 = 29.71$   
 $29.71 - 1.74 = 27.97$   
 $27.97 - 1.74 = 26.23$   
 $26.23 - 1.74 = 24.49$   
 $24.49 - 1.74 = 22.75$   
 $22.75 - 1.74 = 21.01$   
 $21.01 - 1.74 = 19.27$   
 $19.27 - 1.74 = 17.53$   
 $17.53 - 1.74 = 15.79$   
 $15.79 - 1.74 = 14.05$   
 $14.05 - 1.74 = 12.31$   
 $12.31 - 1.74 = 10.57$   
 $10.57 - 1.74 = 8.83$   
 $8.83 - 1.74 = 7.09$   
 $7.09 - 1.74 = 5.35$   
 $5.35 - 1.74 = 3.61$   
 $3.61 - 1.74 = 1.87$   
 $1.87 - 1.74 = 0.13$   
 $0.13 - 1.74 = -1.61$   
 $-1.61 - 1.74 = -3.35$   
 $-3.35 - 1.74 = -5.09$   
 $-5.09 - 1.74 = -6.83$   
 $-6.83 - 1.74 = -8.57$   
 $-8.57 - 1.74 = -10.31$   
 $-10.31 - 1.74 = -12.05$   
 $-12.05 - 1.74 = -13.79$   
 $-13.79 - 1.74 = -15.53$   
 $-15.53 - 1.74 = -17.27$   
 $-17.27 - 1.74 = -19.01$   
 $-19.01 - 1.74 = -20.75$   
 $-20.75 - 1.74 = -22.49$   
 $-22.49 - 1.74 = -24.23$   
 $-24.23 - 1.74 = -25.97$   
 $-25.97 - 1.74 = -27.71$   
 $-27.71 - 1.74 = -29.45$   
 $-29.45 - 1.74 = -31.19$   
 $-31.19 - 1.74 = -32.93$   
 $-32.93 - 1.74 = -34.67$   
 $-34.67 - 1.74 = -36.41$   
 $-36.41 - 1.74 = -38.15$   
 $-38.15 - 1.74 = -39.89$   
 $-39.89 - 1.74 = -41.63$   
 $-41.63 - 1.74 = -43.37$   
 $-43.37 - 1.74 = -45.11$   
 $-45.11 - 1.74 = -46.85$   
 $-46.85 - 1.74 = -48.59$   
 $-48.59 - 1.74 = -50.33$   
 $-50.33 - 1.74 = -52.07$   
 $-52.07 - 1.74 = -53.81$   
 $-53.81 - 1.74 = -55.55$   
 $-55.55 - 1.74 = -57.29$   
 $-57.29 - 1.74 = -59.03$   
 $-59.03 - 1.74 = -60.77$   
 $-60.77 - 1.74 = -62.51$   
 $-62.51 - 1.74 = -64.25$   
 $-64.25 - 1.74 = -65.99$   
 $-65.99 - 1.74 = -67.73$   
 $-67.73 - 1.74 = -69.47$   
 $-69.47 - 1.74 = -71.21$   
 $-71.21 - 1.74 = -72.95$   
 $-72.95 - 1.74 = -74.69$   
 $-74.69 - 1.74 = -76.43$   
 $-76.43 - 1.74 = -78.17$   
 $-78.17 - 1.74 = -79.91$   
 $-79.91 - 1.74 = -81.65$   
 $-81.65 - 1.74 = -83.39$   
 $-83.39 - 1.74 = -85.13$   
 $-85.13 - 1.74 = -86.87$   
 $-86.87 - 1.74 = -88.61$   
 $-88.61 - 1.74 = -90.35$   
 $-90.35 - 1.74 = -92.09$   
 $-92.09 - 1.74 = -93.83$   
 $-93.83 - 1.74 = -95.57$   
 $-95.57 - 1.74 = -97.31$   
 $-97.31 - 1.74 = -99.05$   
 $-99.05 - 1.74 = -100.79$   
 $-100.79 - 1.74 = -102.53$   
 $-102.53 - 1.74 = -104.27$   
 $-104.27 - 1.74 = -106.01$   
 $-106.01 - 1.74 = -107.75$   
 $-107.75 - 1.74 = -109.49$   
 $-109.49 - 1.74 = -111.23$   
 $-111.23 - 1.74 = -112.97$   
 $-112.97 - 1.74 = -114.71$   
 $-114.71 - 1.74 = -116.45$   
 $-116.45 - 1.74 = -118.19$   
 $-118.19 - 1.74 = -119.93$   
 $-119.93 - 1.74 = -121.67$   
 $-121.67 - 1.74 = -123.41$   
 $-123.41 - 1.74 = -125.15$   
 $-125.15 - 1.74 = -126.89$   
 $-126.89 - 1.74 = -128.63$   
 $-128.63 - 1.74 = -130.37$   
 $-130.37 - 1.74 = -132.11$   
 $-132.11 - 1.74 = -133.85$   
 $-133.85 - 1.74 = -135.59$   
 $-135.59 - 1.74 = -137.33$   
 $-137.33 - 1.74 = -139.07$   
 $-139.07 - 1.74 = -140.81$   
 $-140.81 - 1.74 = -142.55$   
 $-142.55 - 1.74 = -144.29$   
 $-144.29 - 1.74 = -146.03$   
 $-146.03 - 1.74 = -147.77$   
 $-147.77 - 1.74 = -149.51$   
 $-149.51 - 1.74 = -151.25$   
 $-151.25 - 1.74 = -152.99$   
 $-152.99 - 1.74 = -154.73$   
 $-154.73 - 1.74 = -156.47$   
 $-156.47 - 1.74 = -158.21$   
 $-158.21 - 1.74 = -159.95$   
 $-159.95 - 1.74 = -161.69$   
 $-161.69 - 1.74 = -163.43$   
 $-163.43 - 1.74 = -165.17$   
 $-165.17 - 1.74 = -166.91$   
 $-166.91 - 1.74 = -168.65$   
 $-168.65 - 1.74 = -170.39$   
 $-170.39 - 1.74 = -172.13$   
 $-172.13 - 1.74 = -173.87$   
 $-173.87 - 1.74 = -175.61$   
 $-175.61 - 1.74 = -177.35$   
 $-177.35 - 1.74 = -179.09$   
 $-179.09 - 1.74 = -180.83$   
 $-180.83 - 1.74 = -182.57$   
 $-182.57 - 1.74 = -184.31$   
 $-184.31 - 1.74 = -186.05$   
 $-186.05 - 1.74 = -187.79$   
 $-187.79 - 1.74 = -189.53$   
 $-189.53 - 1.74 = -191.27$   
 $-191.27 - 1.74 = -193.01$   
 $-193.01 - 1.74 = -194.75$   
 $-194.75 - 1.74 = -196.49$   
 $-196.49 - 1.74 = -198.23$   
 $-198.23 - 1.74 = -199.97$   
 $-199.97 - 1.74 = -201.71$   
 $-201.71 - 1.74 = -203.45$   
 $-203.45 - 1.74 = -205.19$   
 $-205.19 - 1.74 = -206.93$   
 $-206.93 - 1.74 = -208.67$   
 $-208.67 - 1.74 = -210.41$   
 $-210.41 - 1.74 = -212.15$   
 $-212.15 - 1.74 = -213.89$   
 $-213.89 - 1.74 = -215.63$   
 $-215.63 - 1.74 = -217.37$   
 $-217.37 - 1.74 = -219.11$   
 $-219.11 - 1.74 = -220.85$   
 $-220.85 - 1.74 = -222.59$   
 $-222.59 - 1.74 = -224.33$   
 $-224.33 - 1.74 = -226.07$   
 $-226.07 - 1.74 = -227.81$   
 $-227.81 - 1.74 = -229.55$   
 $-229.55 - 1.74 = -231.29$   
 $-231.29 - 1.74 = -233.03$   
 $-233.03 - 1.74 = -234.77$   
 $-234.77 - 1.74 = -236.51$   
 $-236.51 - 1.74 = -238.25$   
 $-238.25 - 1.74 = -240.00$   
 $-240.00 - 1.74 = -241.74$   
 $-241.74 - 1.74 = -243.48$   
 $-243.48 - 1.74 = -245.22$   
 $-245.22 - 1.74 = -246.96$   
 $-246.96 - 1.74 = -248.70$   
 $-248.70 - 1.74 = -250.44$   
 $-250.44 - 1.74 = -252.18$   
 $-252.18 - 1.74 = -253.92$   
 $-253.92 - 1.74 = -255.66$   
 $-255.66 - 1.74 = -257.40$   
 $-257.40 - 1.74 = -259.14$   
 $-259.14 - 1.74 = -260.88$   
 $-260.88 - 1.74 = -262.62$   
 $-262.62 - 1.74 = -264.36$   
 $-264.36 - 1.74 = -266.10$   
 $-266.10 - 1.74 = -267.84$   
 $-267.84 - 1.74 = -269.58$   
 $-269.58 - 1.74 = -271.32$   
 $-271.32 - 1.74 = -273.06$   
 $-273.06 - 1.74 = -274.80$   
 $-274.80 - 1.74 = -276.54$   
 $-276.54 - 1.74 = -278.28$   
 $-278.28 - 1.74 = -280.02$   
 $-280.02 - 1.74 = -281.76$   
 $-281.76 - 1.74 = -283.50$   
 $-283.50 - 1.74 = -285.24$   
 $-285.24 - 1.74 = -286.98$   
 $-286.98 - 1.74 = -288.72$   
 $-288.72 - 1.74 = -290.46$   
 $-290.46 - 1.74 = -292.20$   
 $-292.20 - 1.74 = -293.94$   
 $-293.94 - 1.74 = -295.68$   
 $-295.68 - 1.74 = -297.42$   
 $-297.42 - 1.74 = -299.16$   
 $-299.16 - 1.74 = -300.90$   
 $-300.90 - 1.74 = -302.64$   
 $-302.64 - 1.74 = -304.38$   
 $-304.38 - 1.74 = -306.12$   
 $-306.12 - 1.74 = -307.86$   
 $-307.86 - 1.74 = -309.60$   
 $-309.60 - 1.74 = -311.34$   
 $-311.34 - 1.74 = -313.08$   
 $-313.08 - 1.74 = -314.82$   
 $-314.82 - 1.74 = -316.56$   
 $-316.56 - 1.74 = -318.30$   
 $-318.30 - 1.74 = -320.04$   
 $-320.04 - 1.74 = -321.78$   
 $-321.78 - 1.74 = -323.52$   
 $-323.52 - 1.74 = -325.26$   
 $-325.26 - 1.74 = -327.00$   
 $-327.00 - 1.74 = -328.74$   
 $-328.74 - 1.74 = -330.48$   
 $-330.48 - 1.74 = -332.22$   
 $-332.22 - 1.74 = -333.96$   
 $-333.96 - 1.74 = -335.70$   
 $-335.70 - 1.74 = -337.44$   
 $-337.44 - 1.74 = -339.18$   
 $-339.18 - 1.74 = -340.92$   
 $-340.92 - 1.74 = -342.66$   
 $-342.66 - 1.74 = -344.40$   
 $-344.40 - 1.74 = -346.14$   
 $-346.14 - 1.74 = -347.88$   
 $-347.88 - 1.74 = -349.62$   
 $-349.62 - 1.74 = -351.36$   
 $-351.36 - 1.74 = -353.10$   
 $-353.10 - 1.74 = -354.84$   
 $-354.84 - 1.74 = -356.58$   
 $-356.58 - 1.74 = -358.32$   
 $-358.32 - 1.74 = -360.06$   
 $-360.06 - 1.74 = -361.80$   
 $-361.80 - 1.74 = -363.54$   
 $-363.54 - 1.74 = -365.28$   
 $-365.28 - 1.74 = -367.02$   
 $-367.02 - 1.74 = -368.76$   
 $-368.76 - 1.74 = -370.50$   
 $-370.50 - 1.74 = -372.24$   
 $-372.24 - 1.74 = -373.98$   
 $-373.98 - 1.74 = -375.72$   
 $-375.72 - 1.74 = -377.46$   
 $-377.46 - 1.74 = -379.20$   
 $-379.20 - 1.74 = -380.94$   
 $-380.94 - 1.74 = -382.68$   
 $-382.68 - 1.74 = -384.42$   
 $-384.42 - 1.74 = -386.16$   
 $-386.16 - 1.74 = -387.90$   
 $-387.90 - 1.74 = -389.64$   
 $-389.64 - 1.74 = -391.38$   
 $-391.38 - 1.74 = -393.12$   
 $-393.12 - 1.74 = -394.86$   
 $-394.86 - 1.74 = -396.60$   
 $-396.60 - 1.74 = -398.34$   
 $-398.34 - 1.74 = -400.08$   
 $-400.08 - 1.74 = -401.82$   
 $-401.82 - 1.74 = -403.56$   
 $-403.56 - 1.74 = -405.30$   
 $-405.30 - 1.74 = -407.04$   
 $-407.04 - 1.74 = -408.78$   
 $-408.78 - 1.74 = -410.52$   
 $-410.52 - 1.74 = -412.26$   
 $-412.26 - 1.74 = -414.00$   
 $-414.00 - 1.74 = -415.74$   
 $-415.74 - 1.74 = -417.48$   
 $-417.48 - 1.74 = -419.22$   
 $-419.22 - 1.74 = -420.96$   
 $-420.96 - 1.74 = -422.70$   
 $-422.70 - 1.74 = -424.44$   
 $-424.44 - 1.74 = -426.18$   
 $-426.18 - 1.74 = -427.92$   
 $-427.92 - 1.74 = -429.66$   
 $-429.66 - 1.74 = -431.40$   
 $-431.40 - 1.74 = -433.14$   
 $-433.14 - 1.74 = -434.88$   
 $-434.88 - 1.74 = -436.62$   
 $-436.62 - 1.74 = -438.36$   
 $-438.36 - 1.74 = -440.10$   
 $-440.10 - 1.74 = -441.84$   
 $-441.84 - 1.74 = -443.58$   
 $-443.58 - 1.74 = -445.32$   
 $-445.32 - 1.74 = -447.06$   
 $-447.06 - 1.74 = -448.80$   
 $-448.80 - 1.74 = -450.54$   
 $-450.54 - 1.74 = -452.28$   
 $-452.28 - 1.74 = -454.02$   
 $-454.02 - 1.74 = -455.76$   
 $-455.76 - 1.74 = -457.50$   
 $-457.50 - 1.74 = -459.24$   
 $-459.24 - 1.74 = -460.98$   
 $-460.98 - 1.74 = -462.72$   
 $-462.72 - 1.74 = -464.46$   
 $-464.46 - 1.74 = -466.20$   
 $-466.20 - 1.74 = -467.94$   
 $-467.94 - 1.74 = -469.68$   
 $-469.68 - 1.74 = -471.42$   
 $-471.42 - 1.74 = -473.16$   
 $-473.16 - 1.74 = -474.90$   
 $-474.90 - 1.74 = -476.64$   
 $-476.64 - 1.74 = -478.38$   
 $-478.38 - 1.74 = -480.12$   
 $-480.12 - 1.74 = -481.86$   
 $-481.86 - 1.74 = -$